

BATTERY CHARGER INSTRUCTION MANUAL

Thank you for purchasing our product, please read
the manual carefully before using.

CATALOGUE

1、 BRIEF

2、 PANEL DIAGRAM

3、 ELECTRIC DIAGRAM

4、 INSTALLATION AND USE

1、 BRIEF

The purpose of the machine is to charge lead-acid battery that suitable for automobiles power supply.

User should choose the right output voltage for different battery, 12V or 24V.

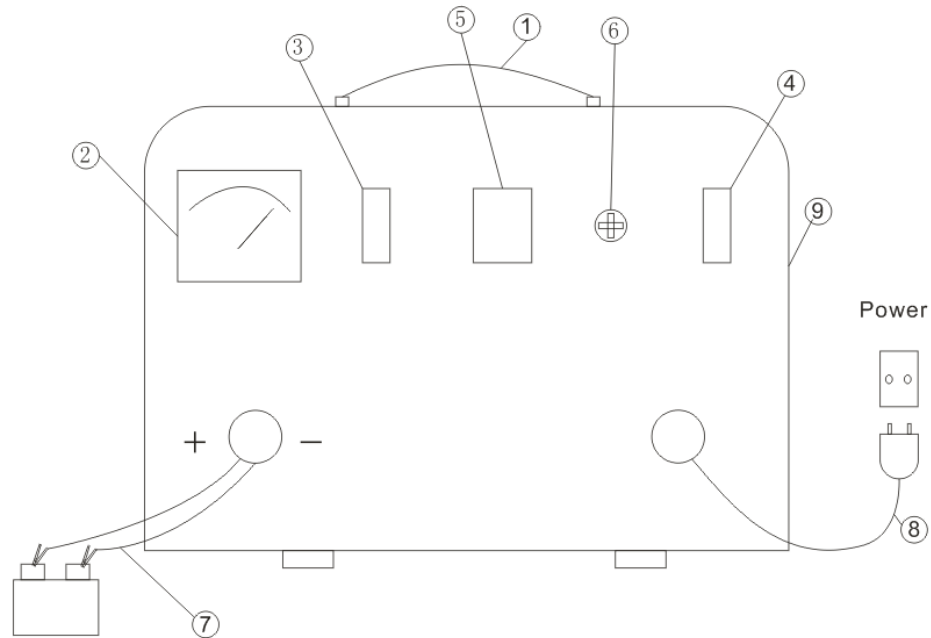
The battery charger has a temperature protection inside machine and it will stop when it is overheated. It will rework when the temperature decrease.

Note: When the charger is over-current the fuse will be broken, and the user have to replace a spare fuse before using it again.

Model	Input Voltage/Frq	Output			Battery Capacity
		Voltage	Current	Fuse	
CB-30	240V/AC 50/60HZ	12/24V DC	30A	30A	30-300Ah
CB-40			40A	40A	40-400Ah
CB-50			50A	50A	50-500Ah
CB-30A			30A	30A	90-220Ah
CB-40A			40A	40A	120-320Ah
CB-50A			50A	50A	150-420Ah

The CB-30, CB-40 & CB-50 “BCB30, BCB40 & BCB50” are normal charger. While CB-30A, CB-40A & CB-50A “BCB30STR, BCB40STR & BCB50STR” are with jump start function.

2. PANEL DIAGRAM of 30A, 40A & 50A with Jump Start function “BCB30STR, BCB40STR & BCB50STR”





1. Handle

2. Output current ammeter

3a. Over-current protection

3b. Functional switch

(Turn on switch  to start charging;
Turn on switch  to jump start.)

4. Big/Small
switchover

7. Electric clamp

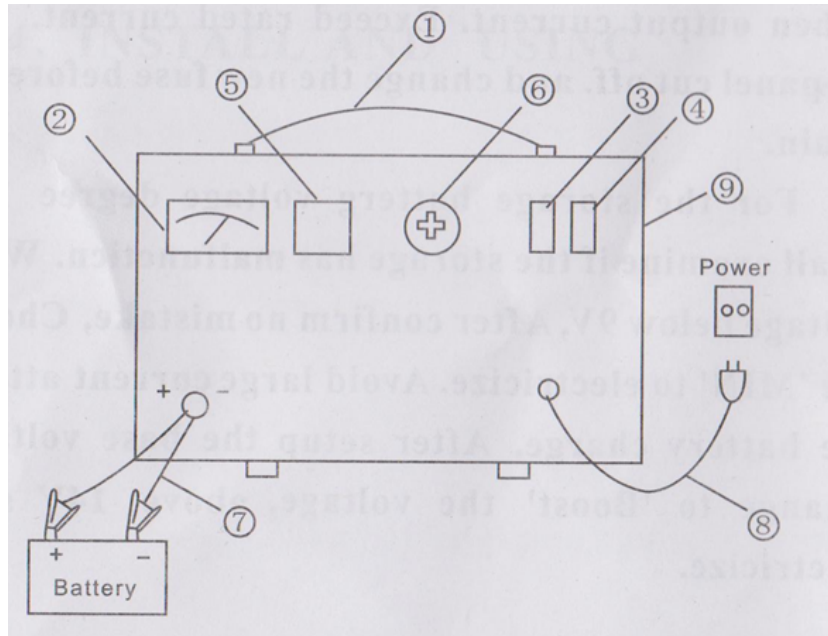
8. Input cable

5. 12V/24V switch

9. Shell

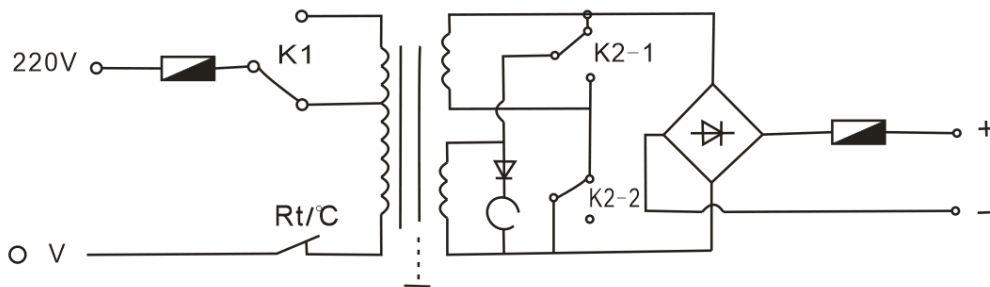
6. Power fuse

PANEL DIAGRAM of 30A, 40A & 50A without
Jump Start function “BCB30, BCB40 &
BCB50”



1. Handle
2. Output current ammeter
3. Over-current protection
4. Big/Small switchover
5. 12V/24V switch
6. Power fuse
7. Electricize clamp
8. Input cable
9. Shell

3. ELECTRIC DIAGRAM



4. INSTALLATION AND USE

- 1、 Locate the battery charger properly and do not expose on direct sunlight, set it in less-vibration, clean and dry place, less of iron-powder dust.
- 2、 Do not put the machine on wet place while using, it may cause electric shock.
- 3、 Before using, please clean the touch point. Connect the red clamp with battery anode, and connect the black with battery cathode. Put the plug into 240V/50Hz jack. Last you can see the current on ammeter.
- 4、 Up keeping and repair if no output current examine as below

- A. Examine the 12V/24V switch if corresponds to the correct location.
- B. Over-current protection settings.
- C. Replacement of fuse.
- D. Oxide on storage battery 'anode' or 'cathode' if still no current after the examination above please contact with the factory.

Note:

1. The polarity of power Output can't be opposite or short circuit.
2. Do not block aerate hole of battery casing.
3. If the battery temperature is too high, the user needs to switch to 'MIN' charging or stop the machine immediately by switching off.



This is the ammeter, when the battery is fully charge the ammeter goes to zero.

Warning:

- 1、 It is forbidden to jump start a "flat battery" , You have to charge the flat battery at least 15minutes before jump starting.
- 2、 When charging, the battery must be in a ventilate condition.
- 3、 When charging in the car, please do as following:
 - a、 First connect the battery charger to the car battery.
 - b、 Make sure the connect point should be far from battery and fuel.
 - c、 Connect the charger to power supply.

- d、 After charging, cut off the power before removing the connectors from the car battery.
- e、 MAX settings will charge faster but it may shortens the life of the battery. MIN settings will charge slower but good for battery.